



AMB PROPERTY CORPORATION
Local partner to global trade.™

FOR LEASE



33,958 SF Available | Seattle Logistics 2 - Building F SeaTac, WA

**18850 - 8th Avenue South
Building F, Suite 900
SeaTac, WA**

<u>Building F</u>	33,958 SF (Divisible)
Suite 900	18,660 SF (10,276 SF Mezzanine)
Office	Up to 15,258 SF
Warehouse	
Clear Height	24'
Loading	12 DH & 1 GL (dock levelers every third dock door)
Location	Located Within 5 Minutes of Cargo Entrance to Sea-Tac Intl. Airport
Features	Spacious Locations Overlooking Mt. Rainier & Airport Runways. Concrete Apron, Dock Canopy, Dock Levelers and Excellent Truck Maneuvering.

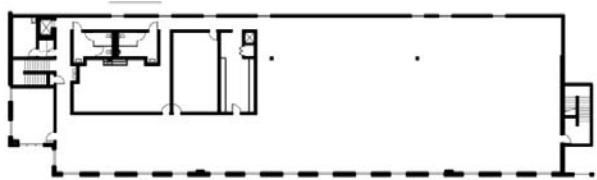


Premier Airfreight Facility in Seattle

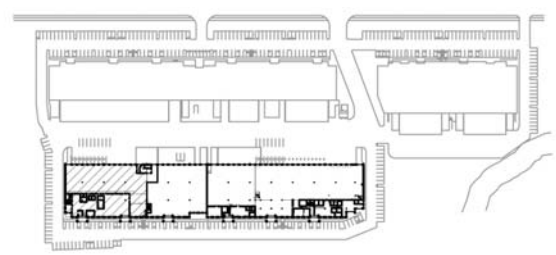
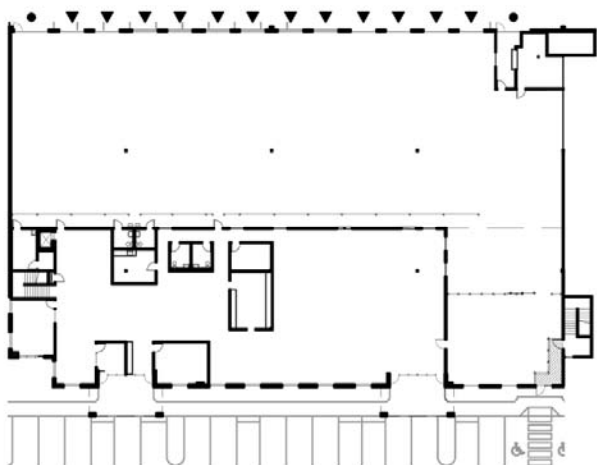


AMB PROPERTY CORPORATION
Local partner to global trade.™

FOR LEASE



MEZZANINE PLAN



NOT TO SCALE



AVAILABLE AREA



OFFICE AREA:	8,384 SF
MEZZANINE:	10,276 SF
WAREHOUSE:	15,298 SF
TOTAL:	33,958 SF

LEGEND

- ON GRADE DOOR
- ▲ DOCK LEVEL DOOR

For additional information, please contact:

Arie Salomon, SIOR, CCIM
NAI Puget Sound Properties
Principal
Direct 425 586 5636
Fax 425 455 9138
Email asalomon@nai-psp.com

Jeff Forsberg, CCIM
NAI Puget Sound Properties
Principal
Direct 425 586 5610
Fax 425 455 9138
Email jforsberg@nai-psp.com

Billy Moultrie
NAI Puget Sound Properties
Principal
Direct 425 586 5612
Fax 425 455 9138
Email bmoultrie@nai-psp.com



Commercial Real Estate Services, Worldwide.

NO WARRANTIES OR REPRESENTATIONS, EXPRESSED OR IMPLIED, ARE MADE AS TO THE ACCURACY OR COMPLETENESS OF THE INFORMATION CONTAINED HEREIN AND SAME IS SUBMITTED SUBJECT TO ERRORS, OMISSIONS, RENTAL OR OTHER CONDITIONS, WITHDRAWAL WITHOUT NOTICE, AND TO ANY SPECIAL LISTING CONDITIONS IMPOSED BY OUR PRINCIPALS. ALL SIZES ARE APPROXIMATE. AMB MAKES NO COMMITMENT TO UPDATE THE INFORMATION CONTAINED HEREIN, AND MAY MAKE CHANGES TO THESE MATERIALS AT ANY TIME WITHOUT NOTICE. IN NO EVENT SHALL AMB OR ITS AFFILIATES BE LIABLE FOR ANY DAMAGES WHATSOEVER (INCLUDING, WITHOUT LIMITATION, DAMAGES FOR LOSS OF PROFITS, BUSINESS INTERRUPTION, OR LOSS OF OPPORTUNITY) ARISING OUT OF THE USE OF THE INFORMATION CONTAINED HEREIN.