

Seattle Logistics 2

Building F

23,682 Square Feet Industrial Space For Lease

18850 - 8th Avenue South, SeaTac



PROLOGIS



suite 900

size

- 23,682 square feet (8,240 square feet of office)
- includes 5,622 square feet of mezzanine office
- divisible

features

- 12 dock high doors
- 2 grade level doors
- dock levelers every third dock door
- located within 5 minutes of cargo entrance to SeaTac International Airport
- spacious locations overlooking Mt. Rainier & airport runways
- concrete apron, dock canopy



Commercial Real Estate Services, Worldwide.

NAI Puget Sound Properties

ph 425.586.5600
fax 425.455.9138
11235 SE 6th Street, Suite 130
Bellevue, WA 98004
www.nai-pp.com

Prologis

ph 206.414.7600
fax 206.424.7601
12720 Gateway Drive, Suite 110
Tukwila, WA 98168
www.prologis.com

Seattle Logistics 2

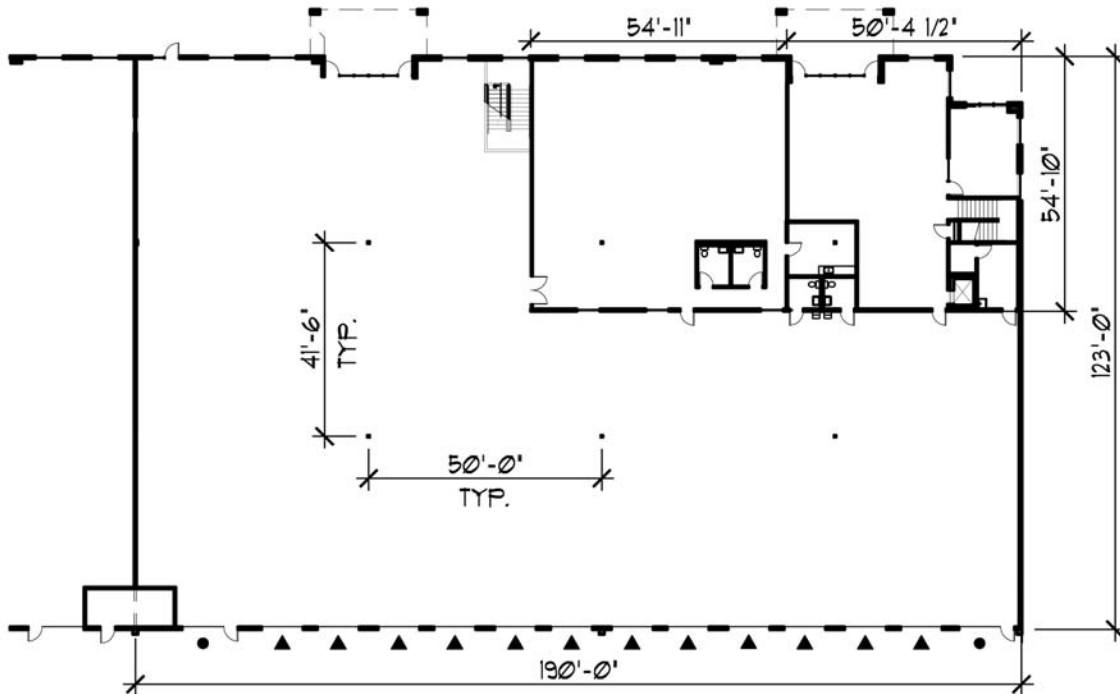
Building F

23,682 Square Feet Industrial Space For Lease

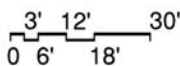
18850 - 8th Avenue South, SeaTac



PROLOGIS



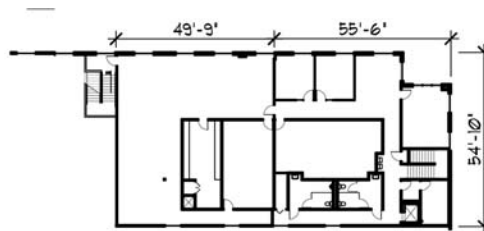
AVAILABLE WAREHOUSE & OFFICE



MAIN FLOOR OFFICE AREA : 2,618 SF
WAREHOUSE AREA : 21,064 SF
TOTAL AREA : 23,682 SF

LEGEND

- ON GRADE DOOR
- ▲ DOCK LEVEL DOOR
- RAIL DOOR



MEZZANINE

TOTAL AREA : 5,622 SF

NAI Puget Sound Properties
Arie Salomon, SIOR, CCIM
asalomon@nai-ppsp.com
ph 425.586.5636
fax 425.455.9138
cell 425.246.9280
11235 SE 6th Street, Suite 130
Bellevue, WA 98004

NAI Puget Sound Properties
Jeff Forsberg, CCIM
jforsberg@nai-ppsp.com
ph 425.586.5610
fax 425.455.9138
cell 206.310.3841
11235 SE 6th Street, Suite 130
Bellevue, WA 98001

NAI Puget Sound Properties
Billy Moultrie
bmoultrie@nai-ppsp.com
ph 253.203.1322
fax 253.203.1333
cell 206.228.1847
1015 'A' Street, Suite 101
Tacoma, WA 98402

Prologis
ph 206.414.7600
fax 206.424.7601
12720 Gateway Drive, Suite 110
Tukwila, WA 98168
www.prologis.com