

For Sublease

Seattle Logistic Center 2

18800 - 8th Avenue S, Building D, SeaTac



Excellent Airport Office

Suite 2100

- 1,117 Total SF
- Views of SeaTac Airport Runways & Mount Rainier
- Common Corridor Restrooms
- Two Large Private Offices
- Full Commission to Broker
- \$1.38 PSF, Plus NNN
- Sublease Through May 2010 (Long-Term Direct Deal Available)



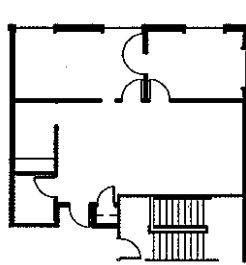
Commercial Real Estate Services, Worldwide.

11235 SE 6th Street, Suite 130
Bellevue WA 98004
425 586 5600 phone
425 455 9138 fax
www.nai-pp.com

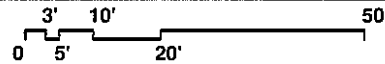
The information contained herein has been given to us by the owner of the property or other sources we deem reliable, we have no reason to doubt its accuracy, but we do not guarantee it. All information should be verified prior to purchase or lease.
Seattle Logistics 2 Bldg D #2100 BM

For More Information Contact:

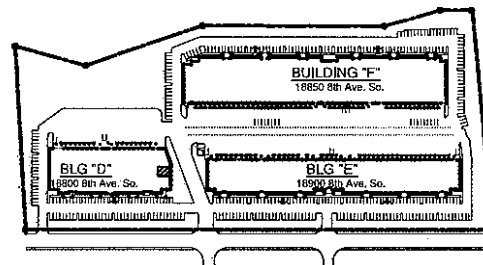
Billy Moultrie
direct 425 586 5612
bmoultrie@nai-pp.com



MEZZANINE AVAILABLE FOR LEASE



TOTAL AREA = 1,117 sf



KEY PLAN

NOT TO SCALE