



AMB PROPERTY CORPORATION
Local partner to global trade.™

FOR LEASE



**6,777 SF
Available**

**Des Moines Logistics Center - Building C
SeaTac, WA**

**19240 Des Moines Memorial Way South, Building C
SeaTac, WA**

Suite 550

Size 6,777 SF
Office 2,140 SF
Warehouse 4,637 SF

Clear Height 28'

Loading 3 DH & 1 GL

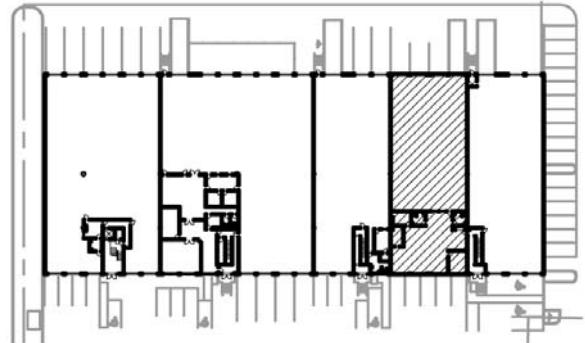
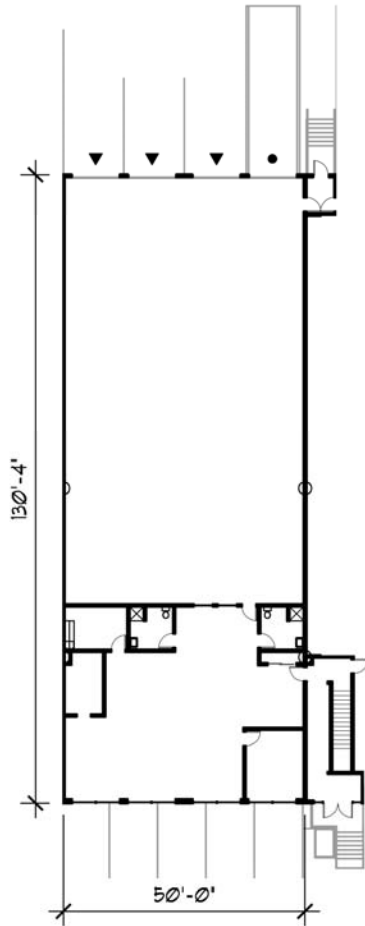
Features Great Airport Location
Convenient Freeway Access





AMB PROPERTY CORPORATION
Local partner to global trade.™

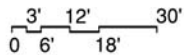
FOR LEASE



KEY PLAN
NOT TO SCALE



AVAILABLE WAREHOUSE & OFFICE



OFFICE AREA : 2,140 SF
WAREHOUSE AREA : 4,637 SF
TOTAL AREA : 6,777 SF

LEGEND

- ON GRADE DOOR
- ▲ DOCK LEVEL DOOR
- RAIL DOOR

For additional information, please contact:

Arie Salomon, SIOR, CCIM
NAI Puget Sound Properties
Principal
Direct 425 586 5636
Fax 425 455 9138
Email asalomon@nai-psp.com

Jeff Forsberg, CCIM
NAI Puget Sound Properties
Principal
Direct 425 586 5610
Fax 425 455 9138
Email jforsberg@nai-psp.com

Billy Moultrie
NAI Puget Sound Properties
Principal
Direct 425 586 5612
Fax 425 455 9138
Email bmoultrie@nai-psp.com



Commercial Real Estate Services, Worldwide.

NO WARRANTIES OR REPRESENTATIONS, EXPRESSED OR IMPLIED, ARE MADE AS TO THE ACCURACY OR COMPLETENESS OF THE INFORMATION CONTAINED HEREIN AND SAME IS SUBMITTED SUBJECT TO ERRORS, OMISSIONS, RENTAL OR OTHER CONDITIONS, WITHDRAWAL WITHOUT NOTICE, AND TO ANY SPECIAL LISTING CONDITIONS IMPOSED BY OUR PRINCIPALS. ALL SIZES ARE APPROXIMATE. AMB MAKES NO COMMITMENT TO UPDATE THE INFORMATION CONTAINED HEREIN, AND MAY MAKE CHANGES TO THESE MATERIALS AT ANY TIME WITHOUT NOTICE. IN NO EVENT SHALL AMB OR ITS AFFILIATES BE LIABLE FOR ANY DAMAGES WHATSOEVER (INCLUDING, WITHOUT LIMITATION, DAMAGES FOR LOSS OF PROFITS, BUSINESS INTERRUPTION, OR LOSS OF OPPORTUNITY) ARISING OUT OF THE USE OF THE INFORMATION CONTAINED HEREIN.